

Newcastle Light Rail

Testing and commissioning

Week commencing Monday 22 October 2018

Testing and commissioning of the light rail system and vehicles is underway to ensure the system is fully functional and safe to carry passengers from early 2019.

This week's activities:

- › The light rail vehicle will be performing a number of tests between Newcastle Interchange and Pacific Park including:
 - checking the brakes, onboard energy storage and charging systems
 - testing GPS and radio communications, and monitoring equipment
 - checking where vehicles need to stop at the platforms
 - ensuring doors open correctly at platforms
- › Tests in the stabling yard will continue including training for the new shunt vehicle (Unimog).

Upcoming activities

In the following weeks, we will continue testing interactions between the light rail vehicle and the six light rail stops. Traffic light testing will also start soon at all intersections and pedestrian crossings along the light rail route.

Traffic and pedestrian changes

Hunter Street between Union and Merewether streets, and Worth Place, will be closed to traffic between 8pm and 5am from Monday 22 to Wednesday 24 October, weather permitting.

Access to Steel Lane will be maintained under traffic control during this time. Access to Civic Lane will be maintained under traffic control via Worth Place, from Honeysuckle Drive. Pedestrian access will be maintained at all times.

Temporary traffic and pedestrian controls will also be in place at night, as required, on Hunter and Scott streets, Steel Street, Worth Place, and Stewart Avenue.

Please keep to speed limits and follow the direction of traffic controllers and signs.

What to expect

There may be some noise associated with this work. We understand our work may be disruptive at times and we apologise for any inconvenience.

Stay informed

Weekly updates about light rail testing are available at revitalisingnewcastle.nsw.gov.au/testing. These include **important information about temporary road closures and night work**.

Please check the website regularly for the latest information about light rail testing. To receive weekly email updates, please subscribe by contacting us at projects@transport.nsw.gov.au

Be aware there's a tram there Safety tip

Look both ways when crossing the tracks at intersections. Do not drive across the tracks unless the path ahead is clear.

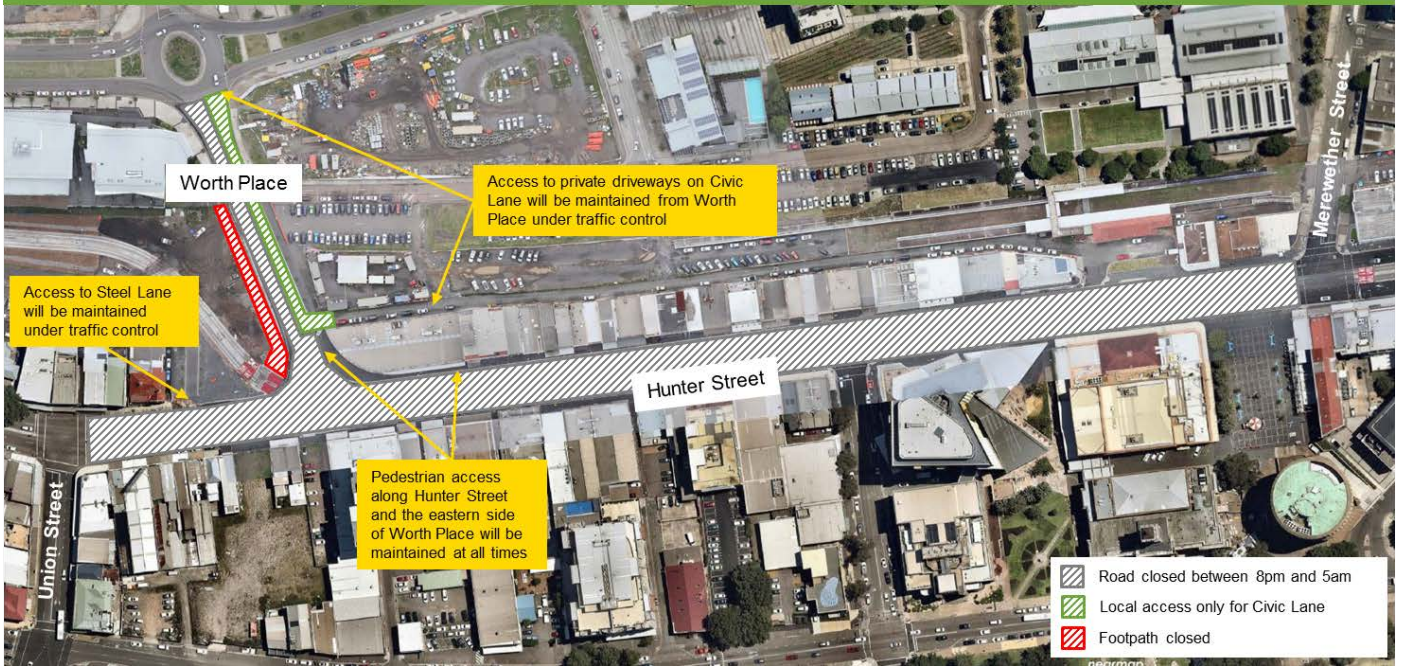


For more information call **1800 684 490**, email projects@transport.nsw.gov.au or visit revitalisingnewcastle.nsw.gov.au

For urgent enquiries or complaints about our activities, call our **24-hour construction response line** on **1800 775 465**



**Road closures - Hunter Street, between Union and Merewether streets, and Worth Place
Monday 22 October to Wednesday 24 October between 8pm and 5am**



For more information call **1800 684 490**,
email projects@transport.nsw.gov.au or
visit revitalisingnewcastle.nsw.gov.au

For urgent enquiries or complaints about
our activities, call our **24-hour construction
response line** on **1800 775 465**

