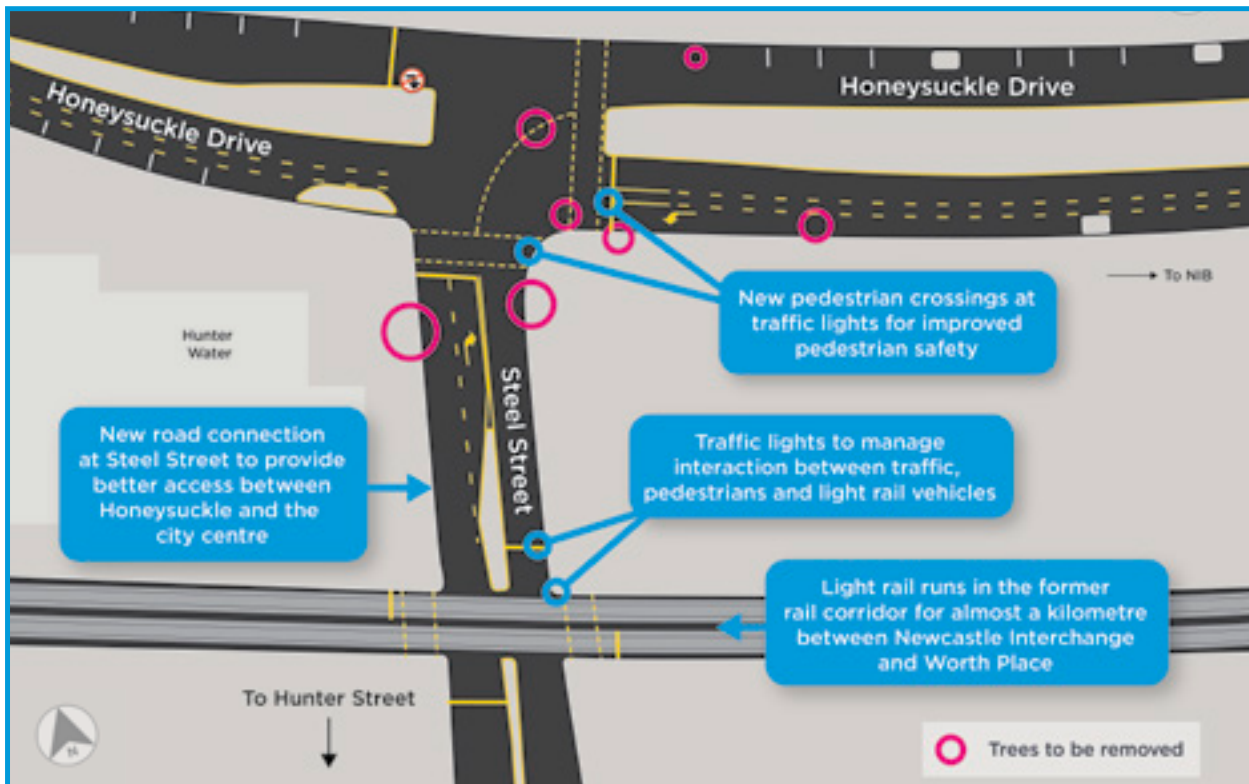


April 2018

Intersection upgrade Honeysuckle Drive and Steel Street from 1 May 2018

The NSW Government is making it easier to get around the city centre by delivering important road upgrades, new connections and better intersections.



Transport for NSW has engaged Downer to carry out the work, which includes:

- › building a new road connection at Steel Street between Hunter Street and Honeysuckle Drive
- › establishing a right turn lane on Steel Street (northbound) onto Honeysuckle Drive to improve traffic flow
- › building a left turn lane (westbound) on Honeysuckle Drive onto Steel Street to increase intersection capacity
- › installing new pedestrian crossings, traffic lights and pedestrian islands for improved pedestrian safety.

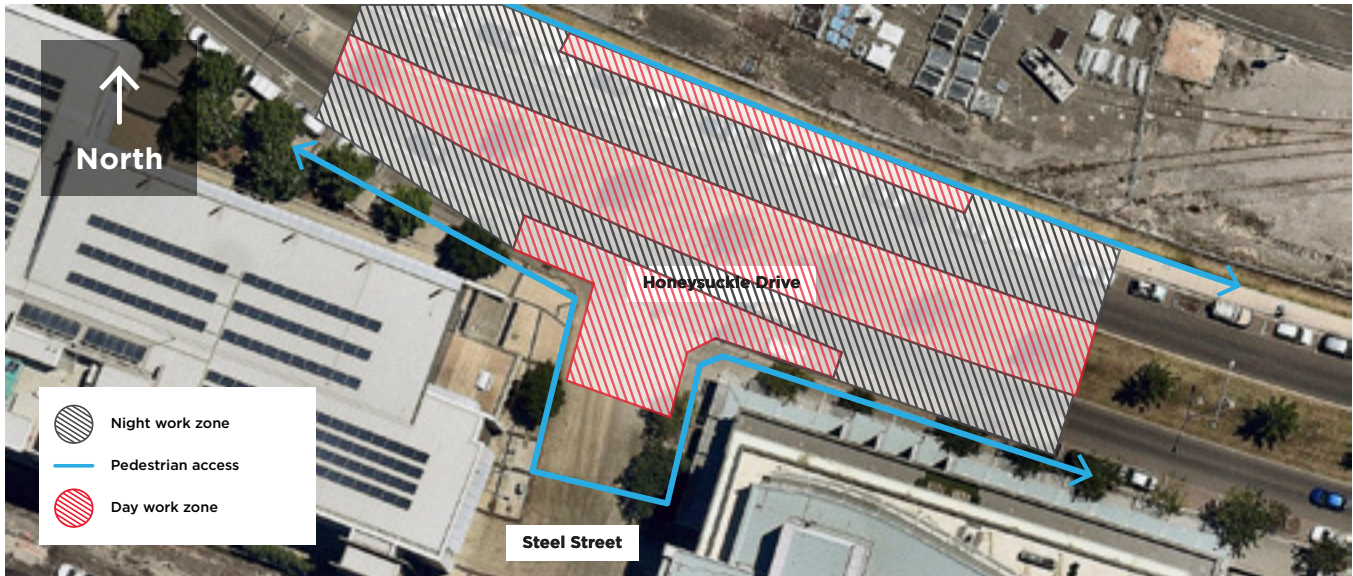
Work starts from **Tuesday 1 May** and is expected to take up to three months to complete, weather permitting.

Work will involve installing temporary barriers and fencing, site investigations, removal of five trees on Honeysuckle Drive and one tree on Steel Street, removal of road surface and excavation, line marking, installing traffic lights kerb replacement, laying road surface, relocation of underground services and relocation of street lights.

Work hours

Most off-road work on the footpath and median will be carried out between **7am** and **6pm** from **Monday to Friday**, and between **8am** and **6pm** on **Saturdays**, weather permitting.

To minimise traffic disruption, most road work will be carried out at night between **7pm** and **7am** from Sunday to Thursday, subject to approval.



Pedestrian and traffic changes

Traffic control will be in place as required on Honeysuckle Drive and Steel Street to allow work to be carried out safely. Pedestrian access on Honeysuckle Drive and driveway access on Steel Street will be maintained. Pedestrian access between Honeysuckle Drive and Hunter Street will be maintained at Stewart Avenue, Kuwumi Place and Worth Place.

Some parking will be temporarily removed on Honeysuckle Drive during this work. Twelve parking spaces on the southern side and eight on the northern side of Honeysuckle Drive will be permanently removed.

There will be changed traffic conditions and road work speed zones in place. Please keep to speed limits and follow the direction of traffic controllers and signs. For the latest traffic updates, you can call 132 701, visit livetraffic.com or download the Live Traffic NSW app.

Equipment

Construction equipment will include, but is not limited to, tree removal equipment, excavators, vacuum trucks, road profilers, rock and concrete hammers, rollers, compactors, road sweepers, concrete and road saws, concrete pumps and trucks, trucks, light vehicles, lighting towers, line marking equipment, generators, cranes and hand tools.

Thank you for your patience during this important work.

How will the work affect you?

There may be some noise, dust and vibration associated with this work. We will aim to minimise the impact of our work by:

- › using water carts to wet down the work area
- › avoiding dust generating work on windy days, wherever possible
- › turning machinery off when not in use
- › scheduling the noisiest activities during the day, wherever possible
- › using acoustic barriers where suitable
- › positioning noisy equipment as far away as possible from residents and businesses
- › using non-tonal reversing beepers on all machinery
- › minimising the number of machines and equipment operating at any one time.

How can I find out more?

Call **1800 684 490**, email projects@transport.nsw.gov.au or visit revitalisingnewcastle.nsw.gov.au

Urgent enquiries or complaints

For urgent enquiries or complaints about construction activities, call our **24-hour construction response line** on **1800 775 465**